



Before commencing any work on the electrical connections, you must first disconnect the device from the mains. None of the 230V connections must be live until the installation has been completed and the housing is closed. Only qualified electricians or authorised service staff are permitted to open the terminal box.



Caution! There are parts that carry mains voltage behind the cover. The terminal box must not be left unsupervised when open. (Prevent non specialists and especially children from gaining access to it.)

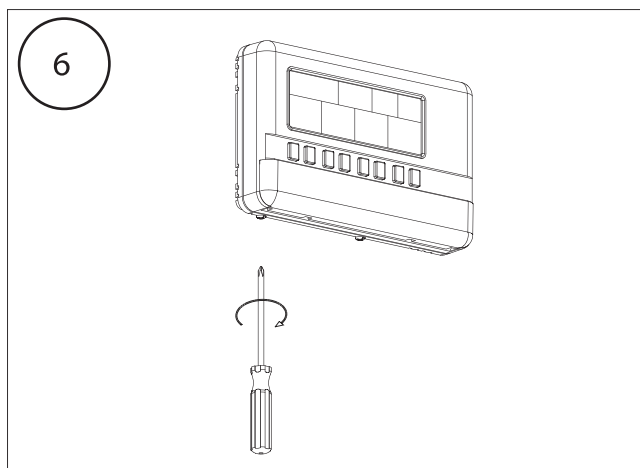
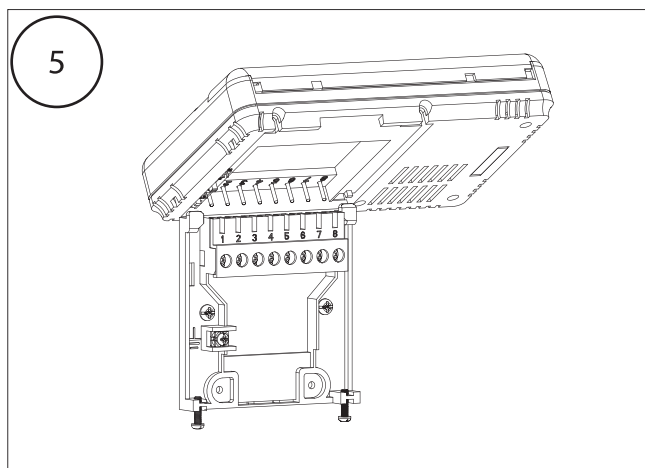
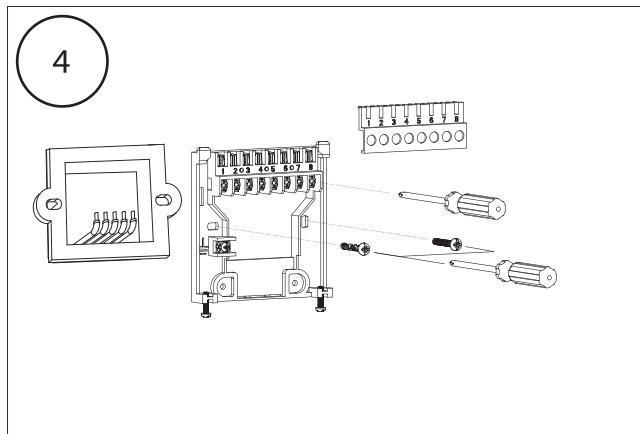
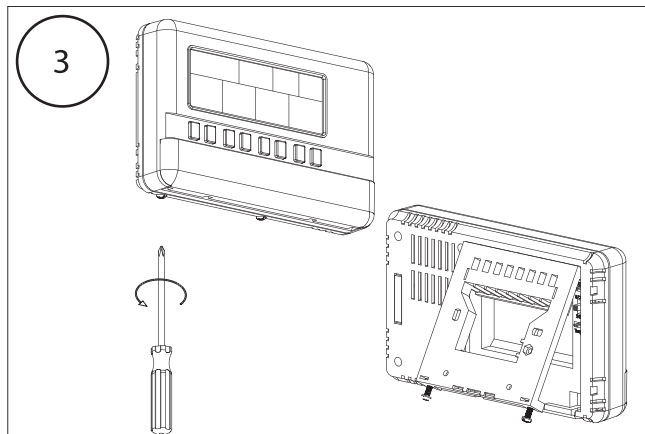
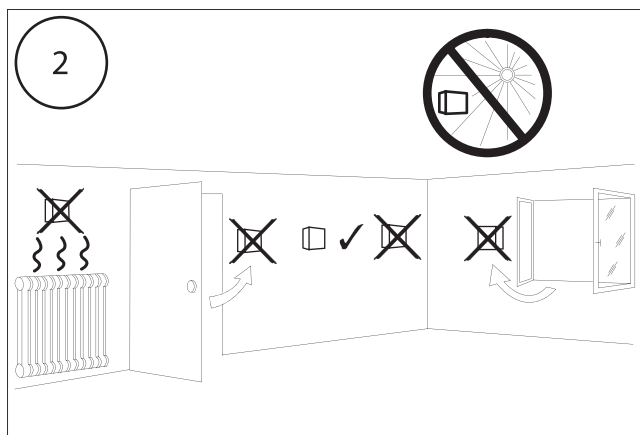
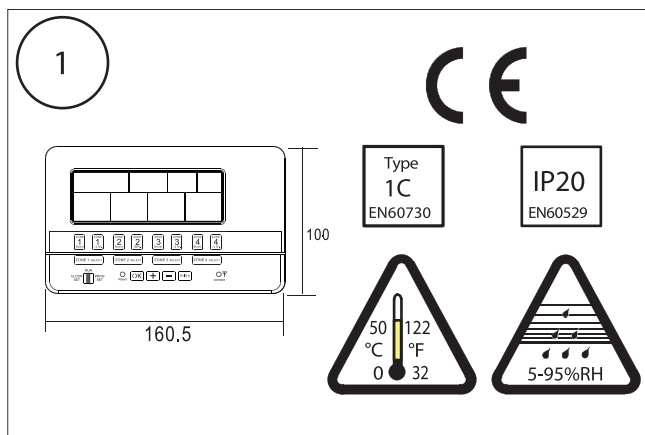


If the device is used in a way not specified by the manufacturer, its safety may be impaired.

This programmer can be mounted in the following ways:

1. Directly wall mounted
2. Mounted to a recessed conduit box

Installation and connection should only be carried out by a qualified person and in accordance with national wiring regulations.



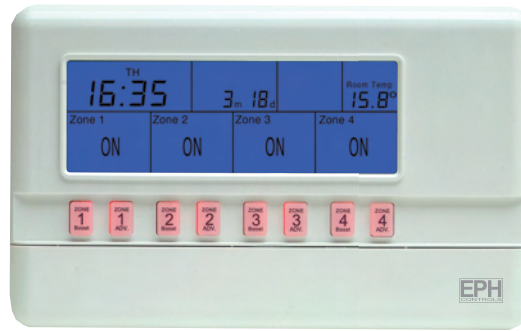
T47 - 4 Zone programmer

Contents

- 1.) Factory default settings
- 2.) Specifications & wiring
- 3.) Programming mode selection
- 4.) Frost protection function
- 5.) Master reset

Important: Keep this document

Prior to setting the programmer, it is necessary to complete all required settings described in this section.



Caution!

There are parts that carry mains voltage behind the cover. The terminal box must not be left unsupervised when open. (Prevent non specialists and especially children from gaining access to it.)

This 4 Zone programmer is designed to provide ON/OFF control for 4 zones, with the value added application of in built frost protection. This programmer is factory set for 230 Volt contacts.

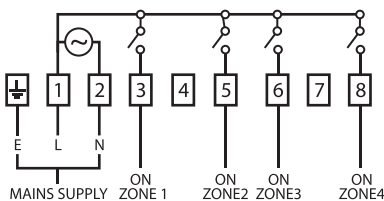
1.) Factory default settings

24 Hr Clock
Temperature Sensing Calibration.
Day-Light Saving.
Switching differential 1°C.
230 Volt contacts.

2.) Specifications & wiring

Power Supply: 230 Vac	Backlight: Blue
Ambient Temp: 0~35°C	IP rating: IP20.
Contact Rating: 250 Vac 3A(1A)	Backplate: British System Standard
Program Memory backup: 1 year	Pollution degree 2: Resistance to
Battery: 3Vdc Lithium LIR 2032	voltage surge 2000V; as per EN 60730

Internal wiring diagram T47



3.) Programming mode selection

This 4 Zone programmer can operate as:

5/2d

Monday to Friday are programmed with the same ON/OFF times.
Saturday and Sunday are programmed with the same ON/OFF times.

7d

Each day of the week is programmed independently thereby allowing different ON/OFF times

24H

Every day of the week is programmed with the same ON/OFF times.

*** Move the selector switch to choose preferred mode ***



4.) Frost protection function - selectable range 5~20°C

This function is set to protect pipes against freezing or to prevent low room temperature when the programmer is programmed to be OFF or is manually OFF.



Take the "jumper" which is included in the packaging of this 4 zone programmer and insert it in the position as shown in the picture.

The programmer must be reset after this jumper is inserted.
(Frost Protection.) will appear on the LCD to indicate the function is activated.

The frost protection temperature setpoint can be altered by following the procedure below.

Move the selector switch to the RUN position.



Press both the **+** and **-** buttons for 5 seconds, to enter selection mode.

Press either the **+** or **-** buttons to increase or decrease the desired frost protection setpoint.

Press **ok** to activate.

All Zones will be switched ON in the event of room temperature falling to the frost protection setpoint.

5.) Master reset

Lower the cover on the front of the programmer.

There are four hinges holding the cover in place.

Between the 3rd and 4th hinges there is a circular hole.

Insert a ball point pen or similar object to master reset the programmer.

After pressing the master reset button, the date and time will now need to be reprogrammed.